



MENSA[®] Education & Research FOUNDATION

1229 Corporate Drive West, Arlington, Texas 76006 • 817/607-0060 • www.mensafoundation.org

Scholarship Chairman
Sangamon Valley Mensa
300 West State Street
Waverly, Illinois 62692-1062

October 7, 2018

Dear Scholarship Coordinator or Friend of the Program:

Please help us tell interested students about this 'quick and easy' essay contest!

The American Mensa Education and Research Foundation has a number of scholarship awards available to U.S. Citizens or legal residents who are enrolled in an accredited U.S. institution of post-secondary education for the Fall/Spring 2019/2020 terms. Scholarship winners will receive awards of \$600 to \$2,500 **based on an online essay of 550 words or less describing their academic or career goals.** The U.S. program relies on approximately 450 volunteers around the nation with support from the Foundation's staff. Last year over 11,000 students competed for 171 scholarships at the local, regional, national, and international levels: these scholarships were valued at over \$130,000.

Additional details on this year's program are contained in the attached flyer, which provides the URL for the list of available scholarships and the instructions for submitting an online essay. *We are guaranteed to have at least one \$600 scholarship winner for the Sangamon Valley area each year.* Recent winners from our area have resided in Petersburg, Decatur, Springfield, Oxford, Chatham, Effingham, Rushville, Robinson, Newton, Chandlerville, Williamsville, and Latham, Illinois. Last year's winner was from Middletown, Illinois.

Your help in posting one or more flyers in suitable locations would be appreciated: please note that the applications must be submitted online no later than January 15, 2019. Publishing the referenced URL in any local scholarship listing, in order to submit an online application and essay, is encouraged: **www.mensafoundation.org**.

Thank you in advance for your assistance! Please e-mail any desired address changes, to include a preferred e-mail address in lieu of this mailing, to dwight.homann@criticalpathsystems.com.

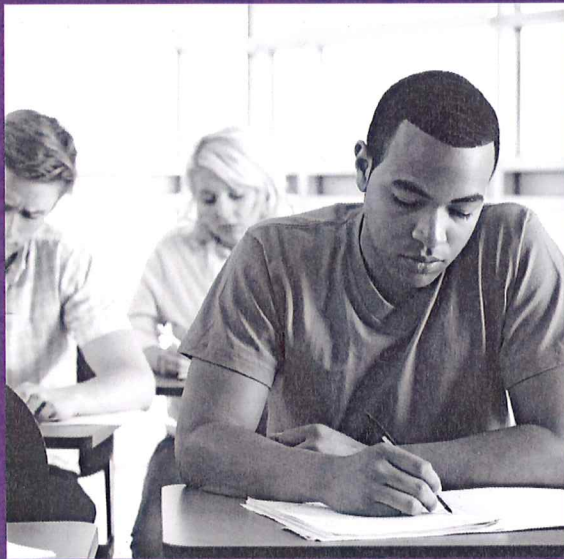
Dwight F. Homann
Scholarship Chairman
Sangamon Valley Mensa

Encl: Flyer

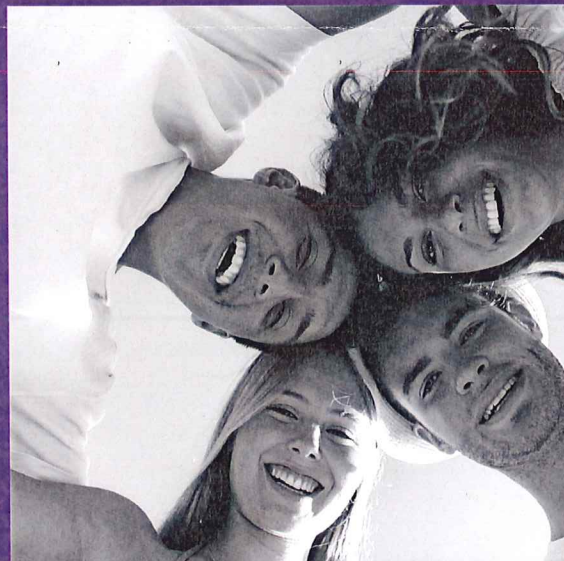


CASH FOR COLLEGE

The Mensa Education and Research Foundation is offering scholarships for students of all ages. The application period is open from Sept. 15 through Jan. 15.



Members of American Mensa as well as non-members may apply to the scholarship program. Applicants are required to submit an essay to be considered. Grades, academic program and/or financial need are not included in the final determination of scholarship recipients.



Find out more by visiting,
mensafoundation.org or by calling
888-294-8035 ext. 5509.

